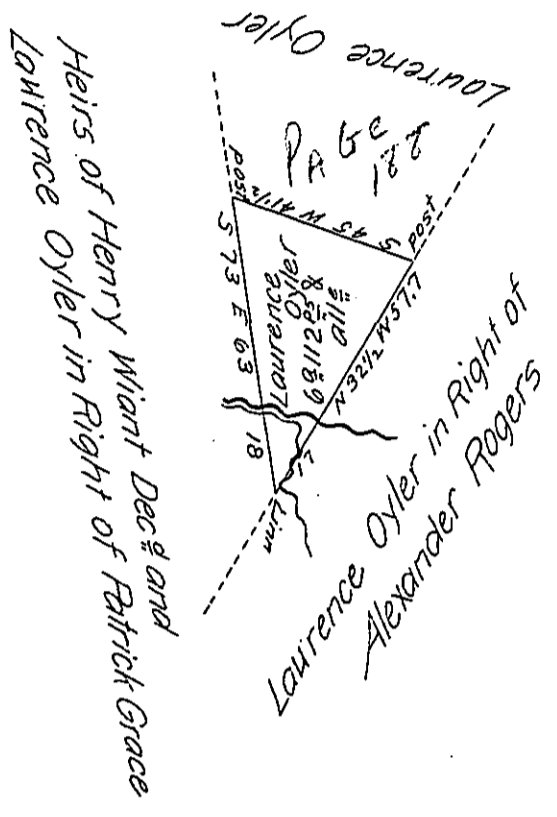


FORM NO. 1.



A Draught of a Tract of Land Situate on the waters of a Small Run Emptying into Dunnings Creek in the township and County of Bedford Containing Six Acres and one hundred and twelve perches and the usual Allowance of Six per Cent for Roads &c. Surveyed for Lawrence Oyer By James Piper Esq: DS the 10th day of June 1813 and Resurveyed and the lines Examined for Lawrence Oyer the 29th day of November A.D. Eighteen hundred and twenty two in pursuance of ^{a warrant} Granted to Said Oyer for Six Acres Dated the 14th August 1818

To Samuel Cochran Esq: }
 Surveyor General }

John Wolf D.S.

IN TESTIMONY that the above is a copy of the original remaining on file in the Department of Internal Affairs of Pennsylvania, made conformably to an Act of Assembly approved the 16th day of February, 1833, I have hereunto set my Hand and caused the Seal of said Department to be affixed at Harrisburg, this seventeenth day of April 1906

Geo. P. ...
 Secretary of Internal Affairs.